

## The Relationship Between Parenting Styles with Child Empathy: A Bibliometric Analysis

Shinta\* & Abd. Madjid

Doctoral Program of Islamic Educational Psychology, Muhammadiyah University of Yogyakarta, Indonesia

\*Corresponding email: [shintabundacinta@gmail.com](mailto:shintabundacinta@gmail.com)

Received: 23 July 2024

Accepted: 20 August 2024

Published: 09 September 2024

**Abstract: The Relationship Between Parenting Styles with Child Empathy: A Bibliometric Analysis.** **Objective:** This research aims to explore research trends regarding the relationship between parenting styles and empathy for children, as well as describe research development opportunities that can be carried out for further research. **Methods:** The research method used in this research is descriptive quantitative with a bibliometric approach. The data source was obtained from the Scopus database. The collected data is then exported to a text file in CSV form for further analysis with the help of the Rstudio Package, which includes networking and Biblioshiny visualization. Citation analysis was carried out on data obtained from the database, and then, an overlay was visualized using VOSviewer. **Findings:** Results show a significant increase in research on the theme from year to year, with a peak in publications in 2021. Valencia and Brigham Young Universities are the main contributors, while the topic of empathy and children's emotional well-being has been a significant focus in recent years. The 2020-2024 period shows several studies that focus on issues regarding parenting styles and also about children's concern for other people. **Conclusion:** This research concludes that the research theme regarding the relationship between parenting patterns and children's empathy still shows a promising trend.

**Keywords:** bibliometric, child empathy, education, parenting styles.

### To cite this article:

Shinta, & Madjid, A. (2024). The Relationship Between Parenting Styles with Child Empathy: A Bibliometric Analysis. *Jurnal Pendidikan Progresif*, 14(2), 1125-1140. doi: 10.23960/jpp.v14.i2.202481.

## INTRODUCTION

Every child born from the mother's womb is pure and clean (fitrah) from sin and mistakes. However, in their development, children also have the potential to be good or bad. The potential for good or bad in a child can manifest itself in the child's character and personality. This is not only influenced by factors within the child but also influences from outside, including parents, school, and the environment. One very influential element is the role of parents. Parents are responsible and contribute significantly to the child's character and personality because everything they do, both words and deeds, even television shows that parents like, will be absorbed and imitated by

the child (Page et al., 2007). Therefore, parents must be wise in sorting, choosing and implementing appropriate and good parenting patterns for their children. In the world of psychology, this is studied in the field of developmental psychology.

Developmental psychology is a branch of psychology that studies human mental development, including parenting patterns (Maulini et al., 2021). Parenting is a pattern of interaction between parents and children, which includes fulfilling physical and psychological needs and socializing community norms so that children can live in accordance with their environment. Parenting patterns are planned and structured

actions regarding how parents should behave in carrying out their child-rearing duties (Page et al., 2007).

In general, parenting patterns are divided into four types, namely authoritarian parenting, authoritative/supportive (democratic), permissive parenting, and *neglectful parenting* (not involved). Parents who are too excessive in controlling their children usually apply an authoritarian parenting style. Authoritarian parenting styles can eliminate autonomy and independence and cause the formation of negative emotions in children. Children who grow up in parental authoritarianism have a shy attitude or always feel guilty, which significantly reduces their self-confidence to try something new or find an effective solution to a problem (MacDermott et al., 2010). Authoritarian parents are also often protective of their children. Parental authoritarianism usually manifests in the form of a harsh and angry attitude, causing deep and lasting emotional wounds in the child, which can result in the child becoming a closed and cold person who is antisocial and often tries to keep secrets and acts manipulatively to avoid anger and physical violence from the child. parents (Cornell & Frick, 2007; Muñoz et al., 2011; Trentacosta & Shaw, 2008). Authoritarian parents' physical violence towards children can be responded to passively by harbouring feelings of anger (Christina M. Rodriguez & Richardson, 2007) so that they feel frustrated, depressed, and stressed living in a family environment filled with rage and violence (McElroy & Rodriguez, 2008; Mennen & Trickett, 2011). Anger that is buried deeper, whether caused by violence or neglect by parents when raising children, can boil over, making children temperamental and angry (De Paul & Guibert, 2008; Pitzer et al., 2011), which can be vented through inappropriate behaviour. Aggressive behaviour that endangers oneself and others, such as committing physical violence, getting involved in fights and mass brawls, as well

as committing murder and various other crimes (Su et al., 2010). The different negative responses displayed by these children actually boil down to children losing their locus of control over emotions and a low sense of empathy due to the blows of violence, whether verbal, sexual or physical, perpetrated by their parents against them (Francis & Wolfe, 2008; McElroy & Rodriguez, 2008; Moor & Silvern, 2006).

A parenting style that applies balance is included in the authoritative parenting style, which is also called democratic parenting. The balance in question is between providing warmth such as open communication, support and involvement by applying supervision, namely always being aware and caring about children's activities inside and outside the home, such as doing homework, watching television shows and playing with peers, identified as an ideal pattern. In parenting (Jones et al., 2008). The balance in positive parenting patterns can be in the form of parental concern for children, which naturally responds to the hypothalamus-midbrain-limbic-paralimbic-cortical circuit network, thereby triggering the excretion of several hormones, including oxytocin, to support the caring response of parents towards children in particular. children who are still babies (Gladding, 1978; Swain et al., 2008). Positive parenting patterns are characterized by the proactive attitude of parents in anticipating and directing growth and development by educating them with a variety of knowledge and good examples so that they can automatically prevent deviant behaviour in children (Padilla-Walker et al., 2011). Parents must also be responsive and sympathetic to the problems and difficulties experienced by children because these two attitudes can instil good moral attitudes, such as being empathetic and prosocial in children in the future, both when hanging out with friends and when mingling in social life (Gustavo Carlo et al. al., 2018; Davidov & Grusec, 2006). Parents must also be able to forgive various shortcomings

and mistakes made by children because responses in the form of outbursts of anger will only cause emotional wounds in the child. In contrast, responses in the form of forgiveness and acceptance can heal emotional wounds and create reconciliation and harmonization of parental relationships and children (Katherine J. Christensen et al., 2011; Kiefer et al., 2010). Various positive emotions and attitudes such as caring, responsiveness, proactiveness, sympathy, and forgiveness are actually manifestations of a high sense of empathy that resides within a person, in this case, parents, towards their children.

Permissive parenting, where parents are very responsive but do not set clear rules or expectations, can have a significant influence on a child's character. Some of the main influences of permissive parenting on children's character, for example, children who are raised with permissive parenting often have difficulty developing self-discipline. With consistent rules and clear consequences, they may learn the importance of responsibility and self-control. Because of the freedom given without restrictions, children may find it difficult to be independent. They may depend on parents or others to make decisions and solve problems. A lack of boundaries can also lead to impulsive and irresponsible behaviour. Children may exhibit defiant or aggressive behaviour because they are unfamiliar with the consequences of their actions. Although these children may have good relationships with their parents due to high responsiveness, they can have difficulty in social interactions with peers who require compromise, helping each other and following rules. Overall, permissive parenting can provide the necessary love and support but lacks the structure and boundaries needed for the development of good self-discipline, responsibility, and social skills. Therefore, parents need to find a balance between affection and setting clear boundaries to help children develop a healthy and balanced character (Jones et al., 2008).

Empathy is an expression of the heart in the form of compassion and concern for the distress and suffering suffered by other people and trying as much as possible to help so that the distress and suffering immediately disappear from that person (Kiang et al., 2004). Empathy in children can be instilled through supportive parenting towards children and other people. Parenting patterns based on a high sense of empathy can take the form of controlling emotions and displaying empathetic expressions regarding mistakes made and difficulties suffered by children (Strayer & Roberts, 2004), interacting with warmth and affection with children (Soenens et al., 2007), and sensitive to various signals given by children because of the strong emotional bond between parents and children so that parents are always responsive and supportive in accompanying and helping all difficulties felt by children (Psychogiou et al., 2008). Parenting patterns that are driven by a high sense of empathy can take the form of parents' way of communicating with other people that is always correct, honest and gentle (McGrath & Zook, 2011), interacting with everyone by prioritizing kindness and an attitude of love and affection (Kanat-Maymon & Assor, 2010). The heart is permanently moved to help and alleviate the distress and suffering experienced by other people (De Paul & Guibert, 2008). This research aims to bibliometrically analyze various studies on the relationship between parenting patterns and the development of empathetic character in children.

## ■ **METHOD**

### **Research Design**

The research is a literature review study that is described qualitatively.

### **Search Strategy**

The literature search strategy is carried out through an electronic search was carried out on May 13, 2024, by retrieving the Scopus database

to identify scientific articles that discussed “parenting patterns with empathy for children”. The search involved a variety of article types, including articles and not reviews, meta-analyses, or book chapters. The search was limited to the years 1978 to 2024. The study selection process adhered to Preferred Reporting Items for Systematics. Review and Meta-Analysis (PRISMA) guidelines and a flow diagram were created to illustrate the process (Dagli et al., 2024).

### Data Analysis

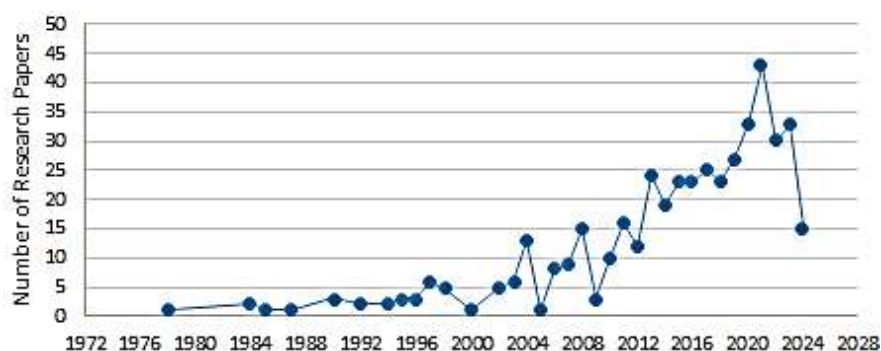
The collected data is then exported to a text file in CSV form for further analysis with the help of the Rstudio Package, including network and visualization Biblioshiny. Citation analysis was carried out on data obtained from the database and then overlaid using VOSviewer (<https://www.vosviewer.com/>). The first step of this research investigates fluctuations in research article publishing trends. Second, analysis was carried out on the authors who contributed the most and were relevant to the research topic.

Third, analysis was carried out to identify leading universities pertinent to the research topic as well as essential contributors to the research topic of parenting patterns and child empathy. The final analysis involves identifying the keywords that are most frequently used and relevant to the research topic.

## ■ RESULT AND DISCUSSION

### Publication Identity on Parenting Patterns and Empathy in Children

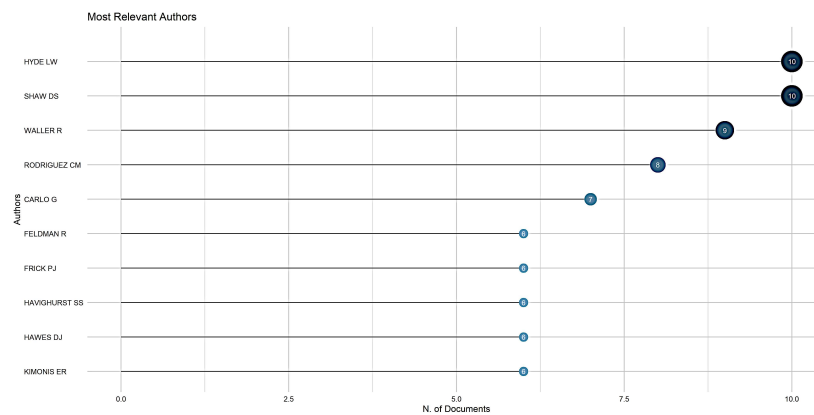
Children are individual figures who absorb many things from the environment around them. Therefore, parents must strive for the best parenting style that supports children’s success in this world and the afterlife. The urgency of parenting styles on children’s development from the past until now, and even at any time, will be the attention and focus of researchers working in the fields of psychology, education, and others. This can at least be seen in the research graph on the relationship between parenting styles and the development of empathy in children in the following picture.



**Figure 1.** Trends in research publications on parenting patterns and empathy in children

The graph above illustrates the fluctuation pattern over several years regarding the publication of research articles on the relationship between parenting styles and the development of empathy in children. Publications of research on parenting patterns and empathy for children increased relatively slowly during the period 1978-1998, then in 2000 experienced a decline.

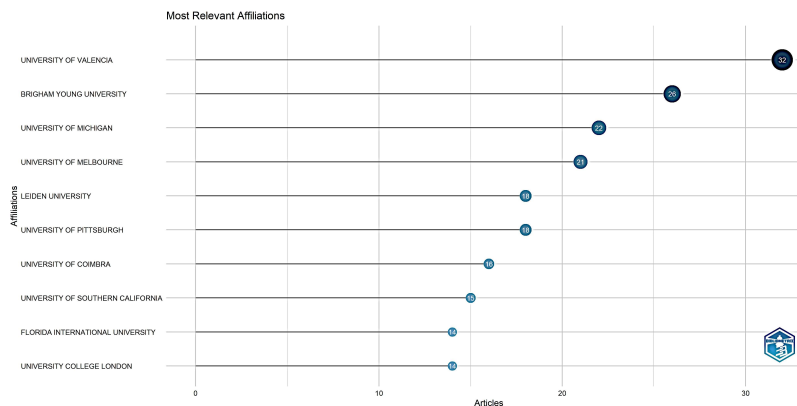
The years 2004, 2008, 2011, and 2013 were also periods of increasing research publications on parenting patterns and empathy for children; the peak occurred in 2021. The periods 2005, 2009, 2014, and 2022 were marked by periods of decreasing research publications on parenting patterns towards children and children’s empathy will occur in 2024.



**Figure 2.** Relevance of the author regarding research on parenting patterns and empathy in children

The image above shows the most relevant authors based on the number of papers published regarding research on the relationship between parenting styles and empathy in children. Hyde LW and Shaw DS emerged as the most relevant significant contributors, having each written ten articles. Hyde LW discusses topics that focus on the influence of parental parenting on children's behavioural and emotional development (Hyde & Dotterer, 2022) (Dotterer et al., 2021). Meanwhile, Shaw D focuses on the topic of the influence of positive parenting styles and parental warmth on children's morals, as well as depression that occurs during childhood (R Waller et al., 2017). Other researchers, such as Waller R, also contributed nine publications which focused on topics about social affiliation, warm

relationships between parents and children, the impact of harsh parenting on children and the effect of the Covid-19 pandemic on parenting patterns on children (Perlstein et al., 2022; Rebecca Waller et al., 2021). Other researchers, such as Rodriguez CM, also contributed eight publications with a focus on factors that influence parenting, such as stress, anger, social support and the conditions of the COVID-19 pandemic, which can cause physical violence against children (Pu & Rodriguez, 2022). Among the ten most influential writers with their collective work totalling 446 publications, Hyde LW and Shaw DS are quite productive researchers, each contributing ten relevant articles that focus on discussions about parenting patterns and empathy for children.



**Figure 3.** Publications from several universities on parenting patterns and empathy in children

The image above presents some of the most relevant universities based on articles that have been published related to research on parenting patterns and child empathy. Valencia University is one of the pioneers which has published 32 publications on various topics, including the influence of parental parenting style on child development, as well as aspects of parental parenting such as warmth and gift giving and their relationship with empathy in children (Garcia et al., 2021; Christina M. Rodriguez et al., 2021). Brigham Young University contributed 26 publications related to parenting practices for children, media interactions on child and adolescent development, as well as exploration

of proactive parenting practices, empathy and self-regulation (Coyne et al., 2023). Furthermore, the University of Michigan and the University of Melbourne each contributed with the publication of 21-22 articles with topics that focused on several factors, such as parents and the environment, which greatly influence emotional and empathetic development in children (Havighurst et al., 2022).

### Trends in Research Publications on Parenting Patterns and Empathy in Children

In the period 1978-2000, research themes on parenting patterns and child empathy still focused on the topic of assertiveness and

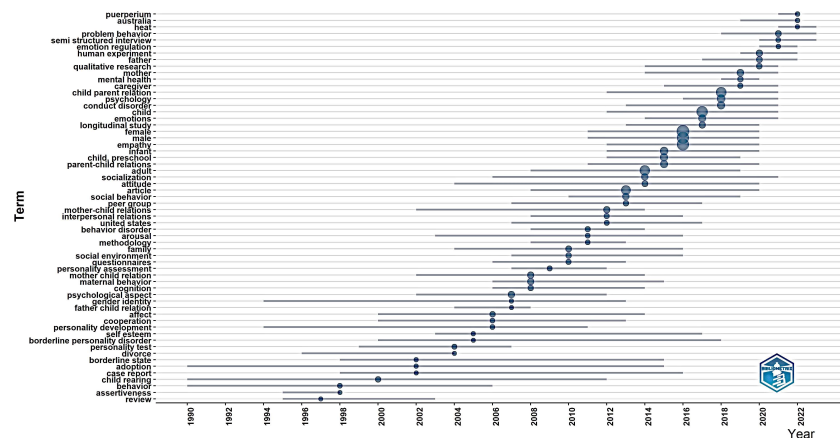
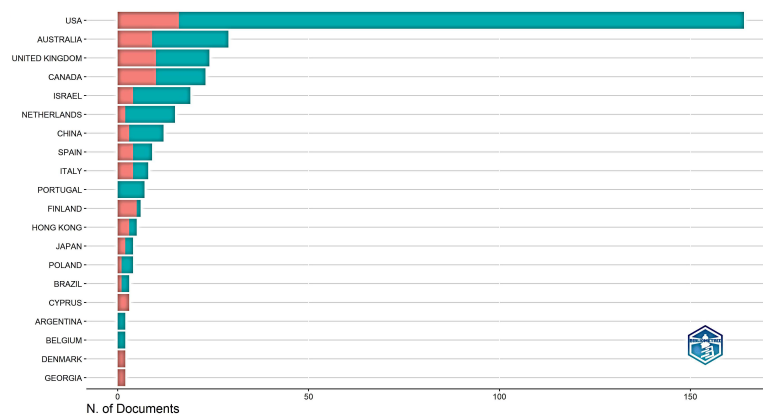


Figure 4. Trends in research topics on parenting patterns and empathy in children

In the period 1978-2000, research themes on parenting patterns and child empathy still focused on the topic of assertiveness and behavioural control in raising children (Hastings & Grusec, 1998; Schill, 1995). Furthermore, in the period 2002-2006, the research theme on parenting patterns and child empathy developed on topics related to adoption, divorce, personality disorders and self-esteem, which were widespread in border states (Kochanska et al., 2004). In 2007-2013, research focused on topics regarding parent-child relationships, psychological aspects, gender identity, social environment, family, behavioural disorders, peer

groups, social behaviour, as well as all things about school that influence the development of children and adolescents (Kochanska et al., 2013). In the period 2014-2019, research was found that discussed topics about empathy, emotional, psychological, and behavioural disorders, parent-child relationships and mental health (CM Rodriguez et al., 2016). The latest period in the 2020-2024 range shows several studies that focus on the topic of parenting patterns applied by mothers after the first experience of giving birth to a child and also about children's concern for other people (Csillag, 2019; Nunes & Mota, 2023).

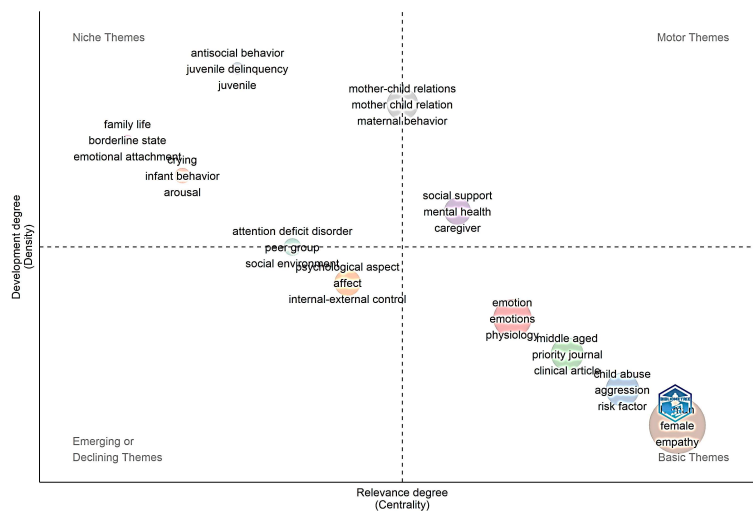




**Figure 5.** Several contributing countries regarding parenting patterns and empathy for children

This figure shows that the majority of research articles regarding parenting patterns and parental empathy for children are publications by authors or groups of authors from one country. Collaborative publications related to research on

parenting patterns and empathy in the context of caring for and educating children are mainly carried out by researchers or writers from the United States, England, Canada and Australia.



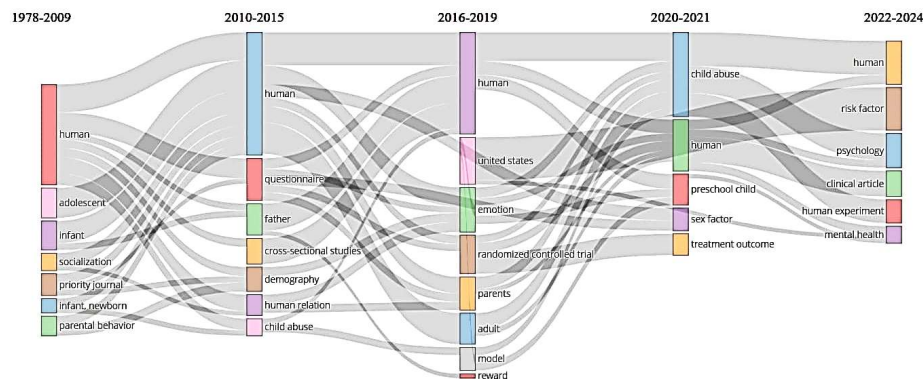
**Figure 6.** Thematic map of research on parenting patterns and empathy in children

A thematic map is a visual representation of the thematic structure of a research area. The thematic maps are divided into empathy categories, including motor themes, basic themes, unique themes and new or decreasing themes. The motor theme represents a vital research theme related to parenting patterns and child empathy, including caregivers, social support, mental health, mother-child relationships and maternal behaviour

(Álvarez et al., 2021; Pu & Rodriguez, 2022; Roberts et al., 2023). The primary themes cover several topics, including emotions, risk factors, empathy, and changes in children's physiology (Borelli et al., 2021). Specific themes on this topic consist of antisocial behaviour, juvenile delinquency, emotional connectedness, family, good behaviour and disorders in children caused by lack of parental attention (Álvarez-García et

al., 2019; Wu & Li, 2023). In the research topic of parenting patterns and children's empathy, there are also new or decreasing themes in the form of social aspects and internal and

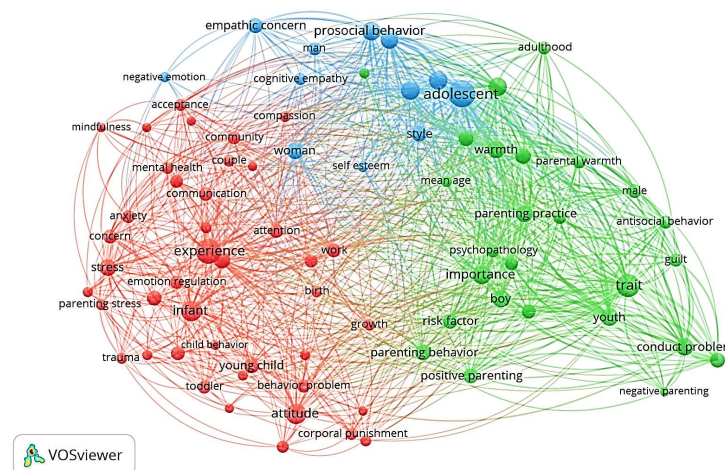
external influences on children's development, which will become essential themes in this topic but have not yet received general recognition.



**Figure 7.** Evolution of research themes on parenting patterns and empathy in children

The image above is a thematic evolution that illustrates the main emphasis in research on parenting patterns and parental empathy for children. In the period 1987-2009, research themes still carried the main topics of teenagers, newborn babies, and parental behaviour (Hanson, 1990; Swain et al., 2008; Wierda-Boer & Rönkä, 2004). The 2010-2015 period they featured research topics on father figures, social relationships, and child abuse (KJ Christensen et al., 2011; CM Rodriguez & Tucker, 2015). In

the 2016-2019 period, there was an emphasis on research topics in the form of reward methods, controlled trials, parents, and emotions (G Carlo et al., 2022). Research in the 2020-2021 period revolves around topics that discuss child abuse, school children, treatment outcomes, and sex factors (CM Rodriguez et al., 2021; Rosa et al., 2020). The last period from 2022 to 2024 shows that research topics focus more on psychological studies and mental health (Kuswanto et al., 2024).



**Figure 8.** Network visualization in research on parenting patterns and empathy in children





parenting patterns and their problems, as well as several factors that influence behaviour in teenagers, children and babies. In 2012, the keyword attitude became the key that appeared most frequently in research. The keyword attitude is related to parenting practices, positive parenting, physical punishment, young children, teenagers, empathy in parenting, stress and the factors that influence it (Tong et al., 2012). The 2014-2016 period is shown in green, where the most prominent keywords are children's character, which is closely related to experience, parenting, empathy, attitudes, antisocial behaviour, environmental influences, warmth from parents, social support, communication, attention, as well as factors and problems in parenting patterns and parental empathy for children (H.-C. Lin et al., 2016).

Based on the analysis of research from various researchers above, a common thread can be drawn that there is a significant relationship between parenting patterns and the development of empathetic character in children. A lack of empathy can influence poor parenting patterns towards children, so they tend to be impatient and get angry quickly; lack of social support, especially from partners in caring for children, and various pressures such as the Covid-19 pandemic and stress, so parents often resort to violence verbally and physically, which can have a negative impact on the child's unempathetic character and personality. Children who lack empathy can harm themselves by carrying out various negative behaviours, such as getting drunk, consuming drugs, and even committing suicide. Children, especially teenagers who are not empathetic, can commit various injustices against other people, such as committing aggression and physical violence, getting involved in commotion and brawls, and even committing theft, murder and other crimes.

On the other hand, a parenting style that is driven by sympathy and empathy for children will manifest in the form of warmth, affection, and

various other forms of care so that children will grow into individuals with character and an empathetic personality towards everyone. Children with compassionate hearts are permanently moved to care and act actively to alleviate the distress and suffering felt by others.

## ■ CONCLUSION

The results of the analysis show that the parenting style of parents is supportive, democratic and warm, which displays balance and moderation between affection and firmness, caring and independence, *reward* and *punishment*, is worthy of being recommended as the best parenting pattern that parents should apply to their children, to create a child's character who has a sense of empathy. Parental parenting patterns that are too protective and authoritarian, which kill a child's potential and talents, can cause loss of self-confidence, inferiority and antisociality, and various negative emotional responses such as frustration, depression, stress, and failure in responding to the dynamics of life. Parental parenting patterns that are too permissive and also don't care allow children to explore various negative potentials within themselves so that they are involved in promiscuity, drinking, consuming drugs, forcing their will, brawls, theft, and various other forms of unempathetic behaviour. From the findings of the key words in this research, it can also be recommended to conduct research on this topic from a perspective that has not been widely discussed, for example about stress in parenting patterns and also child behavior.

## ■ REFERENCES

- Álvarez-García, D., González-Castro, P., Núñez, J. C., Rodríguez, C., & Cerezo, R. (2019). Impact of family and friends on antisocial adolescent behavior: the mediating role of impulsivity and empathy. *Frontiers in Psychology*, 10. <https://doi.org/10.3389/fpsyg.2019.02071>
- Álvarez, M., Byrne, S., & Rodrigo, M. J. (2021).

- Social support dimensions predict parental outcomes in a Spanish early intervention program for positive parenting. *Children and Youth Services Review*, 121. <https://doi.org/10.1016/j.childyouth.2020.105823>
- Borelli, J. L., Stern, J. A., Marvin, M. J., Smiley, P. A., Pettit, C., & Samudio, M. (2021). Reflective functioning and empathy among mothers of school-aged children: Charting the space between. *Emotion*, 21(4), 783–800. <https://doi.org/10.1037/emo0000747>
- Carlo, G, Samper, P., Malonda, E., Mestre, A. L., Tur-Porcar, A. M., & Mestre, M. V. (2022). Longitudinal paths between parents' use of rewards and young adolescents' moral traits and prosocial behaviors. *Journal of Adolescence*, 94(8), 1096–1107. <https://doi.org/10.1002/jad.12086>
- Carlo, Gustavo, Samper, P., Malonda, E., Tur-Porcar, A. M., & Davis, A. (2018). The effects of perceptions of parents' use of social and material rewards on prosocial behaviors in Spanish and U.S. Youth. *Journal of Early Adolescence*, 38(3), 265–287. <https://doi.org/10.1177/0272431616665210>
- Christensen, K J, Padilla-Walker, L. M., Busby, D. M., Hardy, S. A., & Day, R. D. (2011). Relational and social-cognitive correlates of early adolescents' forgiveness of parents. *Journal of Adolescence*, 34(5), 903–913. <https://doi.org/10.1016/j.adolescence.2011.01.001>
- Christensen, Katherine J., Padilla-Walker, L. M., Busby, D. M., Hardy, S. A., & Day, R. D. (2011). Relational and social-cognitive correlates of early adolescents' forgiveness of parents. *Journal of Adolescence*, 34(5), 903–913. <https://doi.org/10.1016/j.adolescence.2011.01.001>
- Cornell, A. H., & Frick, P. J. (2007). The moderating effects of parenting styles in the association between behavioral inhibition and parent-reported guilt and empathy in preschool children. *Journal of Clinical Child and Adolescent Psychology*, 36(3), 305–318. <https://doi.org/10.1080/15374410701444181>
- Coyne, S. M., Reschke, P. J., Stockdale, L., Gale, M., Shawcroft, J., Gentile, D. A., Brown, M., Ashby, S., Siufanua, M., & Ober, M. (2023). Silencing screaming with screens: the longitudinal relationship between media emotion regulation processes and children's emotional reactivity, emotional knowledge, and empathy. *Emotion*, 23(8), 2194–2204. <https://doi.org/10.1037/emo0001222>
- Csillag, V. (2019). The making of a mass murderer: Notes on the novel We need to talk about Kevin. *International Forum of Psychoanalysis*, 28(1), 19–24. <https://doi.org/10.1080/0803706X.2017.1358465>
- Dagli, N., Ahmad, R., Haque, M., & Kumar, S. (2024). Bibliometric analysis of research papers on academic stress (1989-2023). *Cureus*, 16(3). <https://doi.org/10.7759/cureus.55536>
- Davidov, M., & Grusec, J. E. (2006). Untangling the links of parental responsiveness to distress and warmth to child outcomes. *Child Development*, 77(1), 44–58. <https://doi.org/10.1111/j.1467-8624.2006.00855.x>
- De Paul, J., & Guibert, M. (2008). Empathy and child neglect: A theoretical model. *Child Abuse and Neglect*, 32(11), 1063–1071. <https://doi.org/10.1016/j.chiabu.2008.03.003>
- Dotterer, H. L., Burt, S. A., Klump, K. L., & Hyde, L. W. (2021). Associations between parental psychopathic traits, parenting, and

- adolescent callous-unemotional traits. *Research on Child and Adolescent Psychopathology*, 49(11), 1431–1445. <https://doi.org/10.1007/s10802-021-00841-w>
- Francis, K. J., & Wolfe, D. A. (2008). Cognitive and emotional differences between abusive and non-abusive fathers. *Child Abuse and Neglect*, 32(12), 1127–1137. <https://doi.org/10.1016/j.chiabu.2008.05.007>
- Fuentes, M. C., Garcia, O. F., Alcaide, M., Garcia-Ros, R., & Garcia, F. (2022). Analyzing when parental warmth but without parental strictness leads to more adolescent empathy and self-concept: Evidence from Spanish homes. *Frontiers in Psychology*, 13. <https://doi.org/10.3389/fpsyg.2022.1060821>
- Garcia, O. F., Lopez-Fernandez, O., & Serra, E. (2021). Raising spanish children with an antisocial tendency: do we know what the optimal parenting style is? *Journal of Interpersonal Violence*, 36(13–14), 6117–6144. <https://doi.org/10.1177/0886260518818426>
- Gladding, S. T. (1978). Identification of normal infant cry-signals. *Perceptual and Motor Skills*, 267–270.
- Hanson, R. A. (1990). Initial parenting attitudes of pregnant adolescents and a comparison with the decision about adoption. *Adolescence*, 25(99), 629–643.
- Hastings, P. D., & Grusec, J. E. (1998). Parenting goals as organizers of responses to parent-child disagreement. *Developmental Psychology*, 34(3), 465–479. <https://doi.org/10.1037/0012-1649.34.3.465>
- Havighurst, S. S., Kehoe, C. E., Harley, A. E., Radovini, A., & Thomas, R. (2022). A randomized controlled trial of an emotion socialization parenting program and its impact on parenting, children's behavior and parent and child stress cortisol: Tuning in to Toddlers. *Behaviour Research and Therapy*, 149. <https://doi.org/10.1016/j.brat.2021.104016>
- Hyde, L. W., & Dotterer, H. L. (2022). The nature and nurture of callous-unemotional traits. *Current Directions in Psychological Science*, 31(6), 546–555. <https://doi.org/10.1177/09637214221121302>
- Jones, D. J., Forehand, R., Rakow, A., Colletti, C. J. M., McKee, L., & Zalot, A. (2008). The specificity of maternal parenting behavior and child adjustment difficulties: a study of inner-city african american families. *Journal of Family Psychology*, 22(2), 181–192. <https://doi.org/10.1037/0893-3200.22.2.181>
- Kanat-Maymon, M., & Assor, A. (2010). Perceived maternal control and responsiveness to distress as predictors of young adults' empathic responses. *Personality and Social Psychology Bulletin*, 36(1), 33–46. <https://doi.org/10.1177/0146167209347381>
- Kiang, L., Moreno, A. J., & Robinson, J. A. L. (2004). Maternal preconceptions about parenting predict child temperament, maternal sensitivity, and children's empathy. *Developmental Psychology*, 40(6), 1081–1092. <https://doi.org/10.1037/0012-1649.40.6.1081>
- Kiefer, R. P., Worthington, E. L., Myers, B. J., Kliever, W. L., Berry, J. W., Davis, D. E., Kilgour, J. M., Miller, A. J., van Tongeren, D. R., & Hunter, J. L. (2010). Training parents in forgiving and reconciling. *American Journal of Family Therapy*, 38(1), 32–49. <https://doi.org/10.1080/01926180902945723>
- Kochanska, G., Friesenborg, A. E., Lange, L. A., & Martel, M. M. (2004). Parents' personality and infants' temperament as contributors to their emerging relationship.

- Journal of Personality and Social Psychology*, 86(5), 744–759. <https://doi.org/10.1037/0022-3514.86.5.744>
- Kochanska, G., Kim, S., Boldt, L. J., & Yoon, J. E. (2013). Children's callous-unemotional traits moderate links between their positive relationships with parents at preschool age and externalizing behavior problems at early school age. *Journal of Child Psychology and Psychiatry and Allied Disciplines*, 54(11), 1251–1260. <https://doi.org/10.1111/jcpp.12084>
- Kuswanto, C. N., Stafford, L., Schofield, P., & Sharp, J. (2024). Self-compassion and parenting efficacy among mothers who are breast cancer survivors: Implications for psychological distress. *Journal of Health Psychology*, 29(5), 425–437. <https://doi.org/10.1177/13591053231222162>
- Lin, H.-C., Manuel, J., McFatter, R., & Cech, C. (2016). Changes in empathy-related cry responding as a function of time: A time course study of adult's responses to infant crying. *Infant Behavior and Development*, 42, 45–59. <https://doi.org/10.1016/j.infbeh.2015.10.010>
- Lin, Z., Zhou, Z., Zhu, L., & Wu, W. (2023). Parenting styles, empathy and aggressive behavior in preschool children: an examination of mediating mechanisms. *Frontiers in Psychology*, 14. <https://doi.org/10.3389/fpsyg.2023.1243623>
- MacDermott, S. T., Gullone, E., Allen, J. S., King, N. J., & Tonge, B. (2010). The emotion regulation index for children and adolescents (ERICA): A psychometric investigation. *Journal of Psychopathology and Behavioral Assessment*, 32(3), 301–314. <https://doi.org/10.1007/s10862-009-9154-0>
- McElroy, E. M., & Rodriguez, C. M. (2008). Mothers of children with externalizing behavior problems: Cognitive risk factors for abuse potential and discipline style and practices. *Child Abuse and Neglect*, 32(8), 774–784. <https://doi.org/10.1016/j.chiabu.2008.01.002>
- McGrath, M. P., & Zook, J. M. (2011). Maternal control of girls versus boys: relations to empathy and persuasive style with peers. *Journal of Child and Family Studies*, 20(1), 57–65. <https://doi.org/10.1007/s10826-010-9377-4>
- Mendoza Diaz, A., Overgaauw, S., Hawes, D. J., & Dadds, M. R. (2018). Intergenerational stability of callous–unemotional traits. *Child Psychiatry and Human Development*, 49(3), 480–491. <https://doi.org/10.1007/s10578-017-0766-4>
- Mennen, F. E., & Trickett, P. K. (2011). Parenting attitudes, family environments, depression, and anxiety in caregivers of maltreated children. *Family Relations*, 60(3), 259–271. <https://doi.org/10.1111/j.1741-3729.2011.00646.x>
- Moor, A., & Silvern, L. (2006). Identifying pathways linking child abuse to psychological outcome. *Journal of Emotional Abuse*, 6(4), 91–114. [https://doi.org/10.1300/j135v06n04\\_05](https://doi.org/10.1300/j135v06n04_05)
- Muñoz, L. C., Pakalniskiene, V., & Frick, P. J. (2011). Parental monitoring and youth behavior problems: Moderation by callous-unemotional traits over time. *European Child and Adolescent Psychiatry*, 20(5), 261–269. <https://doi.org/10.1007/s00787-011-0172-6>
- Nunes, F., & Mota, C. P. (2023). Parenting styles and suicidal ideation of adolescents: The moderating role of social skills. *Revista Iberoamericana de Psicología y Salud*, 14(1), 18–25. <https://doi.org/10.23923/j.rips.2023.01.062>
- Padilla-Walker, L. M., Christensen, K. J., & Day, R. D. (2011). Proactive parenting practices

- during early adolescence: A cluster approach. *Journal of Adolescence*, 34(2), 203–214. <https://doi.org/10.1016/j.adolescence.2010.05.008>
- Page, T., Combs-Orme, T., & Cain, D. S. (2007). New mothers' psychological experience and behavioral interactions with their infants in the first 12 months. *Journal of Child and Family Studies*, 16(2), 155–167. <https://doi.org/10.1007/s10826-006-9075-4>
- Perlstein, S., Waller, R., Wagner, N. J., & Saudino, K. J. (2022). Low social affiliation predicts increases in callous-unemotional behaviors in early childhood. *Journal of Child Psychology and Psychiatry and Allied Disciplines*, 63(1), 109–117. <https://doi.org/10.1111/jcpp.13466>
- Pitzer, M., Jennen-Steinmetz, C., Esser, G., Schmidt, M. H., & Laucht, M. (2011). Differential susceptibility to environmental influences: The role of early temperament and parenting in the development of externalizing problems. *Comprehensive Psychiatry*, 52(6), 650–658. <https://doi.org/10.1016/j.comppsy.2010.10.017>
- Psychogiou, L., Daley, D., Thompson, M. J., & Sonuga-Barke, E. J. S. (2008). Parenting empathy: Associations with dimensions of parent and child psychopathology. *British Journal of Developmental Psychology*, 26(2), 221–232. <https://doi.org/10.1348/02615100X238582>
- Pu, D. F., & Rodriguez, C. M. (2022). Child and parent factors predictive of mothers' and fathers' perceived family functioning. *Journal of Family Psychology*, 37(1), 121–131. <https://doi.org/10.1037/fam0000971>
- Roberts, R., McCrory, E., Joffe, H., Phillips, H., Gaule, A., & Viding, E. (2023). Parenting boys with conduct problems and callous-unemotional traits: parent and child perspectives. *European Child and Adolescent Psychiatry*, 32(12), 2547–2555. <https://doi.org/10.1007/s00787-022-02109-0>
- Rodriguez, C M, Granger, D. A., & Leerkes, E. M. (2021). Testosterone associations with parents' child abuse risk and at-risk parenting: a multimethod longitudinal examination. *Child Maltreatment*, 26(1), 50–62. <https://doi.org/10.1177/1077559520930819>
- Rodriguez, C M, Smith, T. L., & Silvia, P. J. (2016). Parent–child aggression risk in expectant mothers and fathers: a multimethod theoretical approach. *Journal of Child and Family Studies*, 25(11), 3220–3235. <https://doi.org/10.1007/s10826-016-0481-y>
- Rodriguez, C M, & Tucker, M. C. (2015). Predicting maternal physical child abuse risk beyond distress and social support: additive role of cognitive processes. *Journal of Child and Family Studies*, 24(6), 1780–1790. <https://doi.org/10.1007/s10826-014-9981-9>
- Rodriguez, Christina M., Granger, D. A., & Leerkes, E. M. (2021). Testosterone associations with parents' child abuse risk and at-risk parenting: a multimethod longitudinal examination. *Child Maltreatment*, 26(1), 50–62. <https://doi.org/10.1177/1077559520930819>
- Rodriguez, Christina M., & Richardson, M. J. (2007). Stress and anger as contextual factors and preexisting cognitive schemas: Predicting parental child maltreatment risk. *Child Maltreatment*, 12(4), 325–337. <https://doi.org/10.1177/1077559507305993>
- Rosa, M., Fox, B., & Jennings, W. G. (2020). Do developmental and life-course theory



- risk factors equally predict age of onset among juvenile sexual and nonsexual offenders? *Sexual Abuse: Journal of Research and Treatment*, 32(1), 55–78. <https://doi.org/10.1177/1079063218797714>
- Schill, T. (1995). Social skills of persons with self-defeating personality. *Psychological Reports*, 77(2), 632–634. <https://doi.org/10.2466/pr0.1995.77.2.632>
- Soenens, B., Duriez, B., Vansteenkiste, M., & Goossens, L. (2007). The intergenerational transmission of empathy-related responding in adolescence: The role of maternal support. *Personality and Social Psychology Bulletin*, 33(3), 299–311. <https://doi.org/10.1177/0146167206296300>
- Somech, L. Y., & Elizur, Y. (2012). Promoting self-regulation and cooperation in pre-kindergarten children with conduct problems: A randomized controlled trial. *Journal of the American Academy of Child and Adolescent Psychiatry*, 51(4), 412–422. <https://doi.org/10.1016/j.jaac.2012.01.019>
- Strayer, J., & Roberts, W. (2004). Children's anger, emotional expressiveness, and empathy: Relations with parents' empathy, emotional expressiveness, and parenting practices. *Social Development*, 13(2), 229–254. <https://doi.org/10.1111/j.1467-9507.2004.000265.x>
- Swain, J. E., Tasgin, E., Mayes, L. C., Feldman, R., Todd Constable, R., & Leckman, J. F. (2008). Maternal brain response to own baby-cry is affected by cesarean section delivery. *Journal of Child Psychology and Psychiatry and Allied Disciplines*, 49(10), 1042–1052. <https://doi.org/10.1111/j.1469-7610.2008.01963.x>
- Tong, L., Shinohara, R., Sugisawa, Y., Tanaka, E., Yato, Y., Yamakawa, N., & Anme, T. (2012). Early development of empathy in toddlers: Effects of daily parent-child interaction and home-rearing environment. *Journal of Applied Social Psychology*, 42(10), 2457–2478. <https://doi.org/10.1111/j.1559-1816.2012.00949.x>
- Trentacosta, C. J., & Shaw, D. S. (2008). Maternal predictors of rejecting parenting and early adolescent antisocial behavior. *Journal of Abnormal Child Psychology*, 36(2), 247–259. <https://doi.org/10.1007/s10802-007-9174-8>
- Waller, R, Shaw, D. S., & Hyde, L. W. (2017). Observed fearlessness and positive parenting interact to predict childhood callous-unemotional behaviors among low-income boys. *Journal of Child Psychology and Psychiatry and Allied Disciplines*, 58(3), 282–291. <https://doi.org/10.1111/jcpp.12666>
- Waller, Rebecca, Wagner, N. J., Flom, M., Ganiban, J., & Saudino, K. J. (2021). Fearlessness and low social affiliation as unique developmental precursors of callous-unemotional behaviors in preschoolers. *Psychological Medicine*, 51(5), 777–785. <https://doi.org/10.1017/S003329171900374X>
- Wang, Y., Liu, Y., Ni, J., Liu, A., & Wu, N. (2024). Maternal behavioral control and prosocial behavior in mainland Chinese adolescents: a moderated mediation model of empathy and self-esteem. *Current Psychology*, 43(6), 5301–5308. <https://doi.org/10.1007/s12144-023-04733-8>
- Wierda-Boer, H., & Rönkä, A. (2004). 'I wished my mother enjoyed her work': Adolescents' perceptions of parents' work and their links to adolescent psychosocial well-being. *Young*, 12(4), 317–335. <https://doi.org/10.1177/1103308804046716>
- Wu, K., & Li, S. D. (2023). Coercive parenting and juvenile delinquency in china: assessing

gender differences in the moderating effect of empathic concern. *Journal of Youth and Adolescence*, 52(4), 826–839. <https://doi.org/10.1007/s10964-023-01742-5>

Yamaoka, Y., Hosozawa, M., Sampei, M., Sawada, N., Okubo, Y., Tanaka, K., Yamaguchi, A., Hangai, M., & Morisaki, N. (2021). Abusive and positive parenting behavior in Japan during the COVID-19 pandemic under the state of emergency. *Child Abuse and Neglect*, 120(July), 105212. <https://doi.org/10.1016/j.chiabu.2021.105212>